

HANDWHEEL

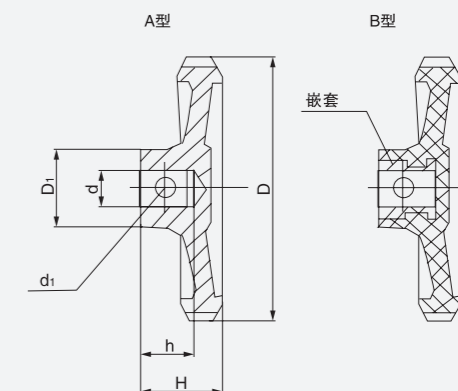
手轮

- 小波纹手轮
Petty solid handwheels
- 小手轮
Small handwheel
- 圆轮缘手轮
Spoked handwheels
- 内波纹手轮
Solid handwheels with fold-away handle
- 背面波纹手轮
Solid handwheels with revolving handle
- 双幅条手轮
Two-spoke handwheels with fold-away handle
- 带可折手柄双幅条手轮
Two-spoke handwheels with fold-away handle
- 内碟形手轮
Solid handwheels with revolving hands
- 直幅手轮
Spoked handwheels with revolving handle
- 波纹圆轮缘手轮
Spoked handwheels with revolving handle
- 内手轮
Internal handwheels
- 外手轮
Spoked handwheels

HY 8313.1

JB/T 7273.1-2014

小波纹手轮 Petty Solid Handwheels



名称 Name	材料 Material	表面处理 Surfaced process
手轮 Handwheel	铝合金 Aluminum alloy\ 胶木 bakelite	黑色 Matt black

参数尺寸 Parameter Size

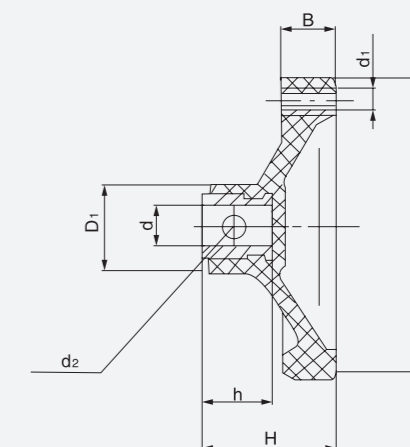
(mm)

产品编号 Item No.	主要尺寸 Main dimensions	安装孔 Mounting hole					
		D	H	D ₁	d	h	d ₁
铝合金 (Aluminum alloy)	胶木 (Bakelite)	D	H	D ₁	d	h	d ₁
HY8313.1\A8x63	HY8313.1\B8x63	63	20	18	8	14	3
HY8313.1\A10x80	HY8313.1\B10x80	80	24	22	10	16	3
HY8313.1\A12x100	HY8313.1\B12x100	100	28	28	12	18	4

HY 8313.2

JB/T 7273.2-2014

小手轮 Small handwheel



名称 Name	材料 Material	表面处理 Surfaced process
手轮 Handwheel	胶木 Bakelite	黑色 Black
手柄 Handle	胶木 Bakelite	黑色 Black

参数尺寸 Parameter Size

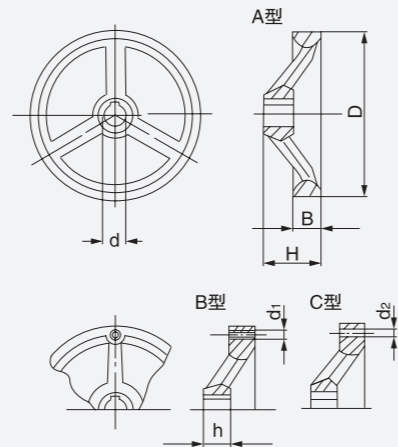
(mm)

产品编号 Item No.	主要尺寸 Main dimensions	安装孔 Mounting hole						
		D	H	B	D ₁	d	h	d ₁
胶木 (Bakelite)	D	H	B	D ₁	d	h	d ₁	d ₂
HY8313.2\10x80	80	32	12	22	10	16	M5	3
HY8313.2\12x100	100	36	14	28	12	18	M6	4
HY8313.2\12x125	125	40	16	28	12	18	M8	4

HY 8313.3

JB/T 7273.3-2014

手轮
Spoked Handwheels
with Revolving Handle



名称 Name	材料 Material	表面处理 Surfaced process
手轮 Handwheel	铸铁 Cast iron	喷砂或镀亮铬
手柄 Handle	钢 Steel	喷砂或镀铬

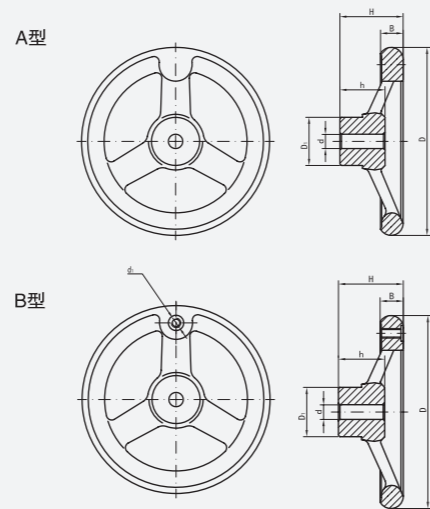
参数尺寸 Parameter Size

产品编号 Item No.	主要尺寸 Main dimensions			安装孔 Mounting hole						
	Type A	Type B	Type C	D	H	B	d	h	d ₁	d ₂
HY8313.3\12x100				100	32	14	12	18	M6	6
HY8313.3\12x125				125	36	16	12	18	M8	8
HY8313.3\16x160				160	40	18	16	20	M10	10
HY8313.3\18x200				200	45	20	18	25	M10	10
HY8313.3\22(25)x250				250	50	22	22, 25	28	M12	12
HY8313.3\25(28)x320 (内波纹)				320	55	24	25, 28	32	M12	12
HY8313.3\28(30)x400				400	65	26	28, 30	40	M16	

注：键槽按 GB1095-79 规定 Notes: Keyway according to standard GB1095-79.

HY 8313.5

圆轮缘手轮
Spoked Handwheels



名称 Name	材料 Material	表面处理 Surfaced process
手轮 Handwheel	铸铁 Cast iron	喷砂或镀亮铬
手柄 Handle	钢 Steel	喷砂或镀铬

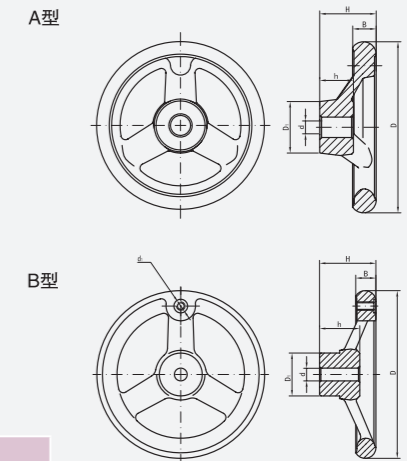
参数尺寸 Parameter Size

产品编号 Item No.	主要尺寸 Main dimensions			安装孔 Mounting hole					
	Type A	Type B	D	H	B	D ₁	d	h	d ₁
HY8313.5A10x80		HY8313.5B10x80	80	29	14	33	10	16	
HY8313.5A10x100		HY8313.5B10x100	100	38	14	33	10	27	M6
HY8313.5A12x125		HY8313.5B12x125	125	42	15	38	12	30	M8
HY8313.5A16x151		HY8313.5B16x151	151	46	17	42	16	32	M10
HY8313.5A18x203		HY8313.5B18x203	203	55.5	22.2	42	18	38	M10
HY8313.5A18x254		HY8313.5B18x254	254	60.3	24	47.6	18	42	M10

注：键槽按 GB1095-79 规定 Notes: Keyway according to standard GB1095-79.

HY 8313.5L

圆轮缘手轮
Spoked Handwheels



名称 Name	材料 Material	表面处理 Surfaced process
手轮 Handwheel	铝合金 Aluminum alloy	喷砂、镀铬、黑色喷塑、抛光
手柄 Handle	铝合金 Aluminum alloy	喷砂、镀铬、黑色喷塑、抛光

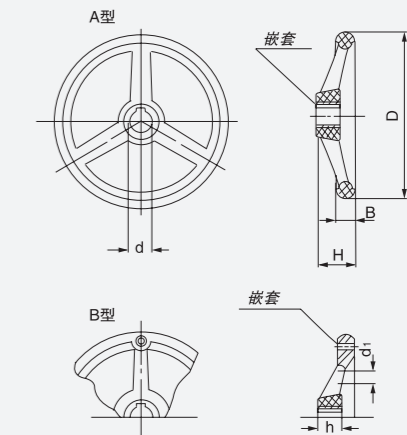
参数尺寸 Parameter Size

产品编号 Item No.	主要尺寸 Main dimensions			安装孔 Mounting hole					
	Type A	Type B	D	H	B	D ₁	d	h	d ₁
HY8313.5LA10x80		HY8313.5LB10x80	80	29	14	24	10	16	M6
HY8313.5LA10x100		HY8313.5LB10x100	100	33	15	26	10	17	M6
HY8313.5LA12x125		HY8313.5LB12x125	125	36	16	28	12	18	M8
HY8313.5LA16x160		HY8313.5LB16x160	160	40	18	33	16	20	M10
HY8313.5LA18x200		HY8313.5LB18x200	200	45	22	38	18	24	M10

注：键槽按 GB1095-79 规定 Notes: Keyway according to standard GB1095-79.

HY 8313.5-1

圆轮缘手轮
Spoked Handwheels
with Revolving Handle



名称 Name	材料 Material	表面处理 Surfaced process
手轮 Handwheel	增强尼龙 Reinforced nylon	黑色 Black\橙色 Orange
手柄 Handle	塑 Plastic	黑色 Black

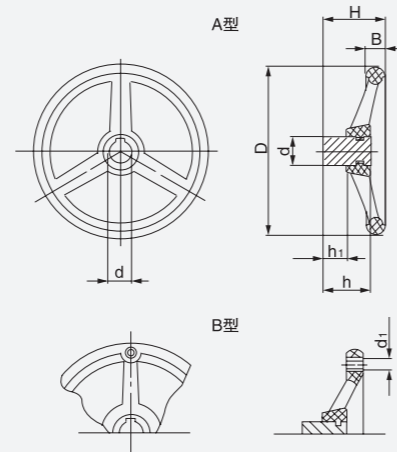
参数尺寸 Parameter Size

产品编号 Item No.	主要尺寸 Main dimensions			安装孔 Mounting hole				
	Type A	Type B	D	H	B	d	h	d ₁
HY8313.5-1A12x100		HY8313.5-1B12x100	100	40	15	12	18	M6
HY8313.5-1A12x125		HY8313.5-1B12x125	125	42	16	12	18	M8
HY8313.5-1A16x160		HY8313.5-1B16x160	160	50	18	16	20	M10
HY8313.5-1A18x200		HY8313.5-1B18x200	200	57	20	18	27	M10

注：键槽按 GB1095-79 规定 Notes: Keyway according to standard GB1095-79.

HY 8313.5-2

圆轮缘手轮
Spoked Handwheels



名称 Name	材料 Material	表面处理 Surfaced process
手轮 Handwheel	增强尼龙 Reinforced nylon	黑色 Black

参数尺寸 Parameter Size

(mm)

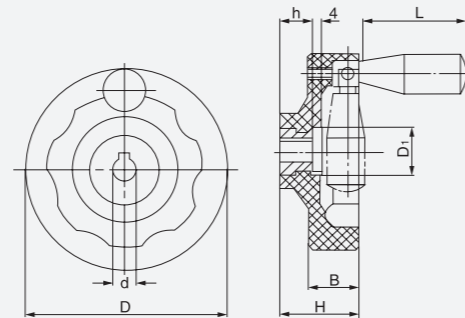
产品编号 Item No.		主要尺寸 Main dimensions			安装孔 Mounting hole			
Type A	Type B	D	H	B	d	h	h ₁	d ₁
HY8313.5-2A18x80	HY8313.5-2B18x80	80	38	14	18	25	10	M6
HY8313.5-2A20x100	HY8313.5-2B20x100	100	42	15	20	26	8	M8
HY8313.5-2A28x125	HY8313.5-2B28x125	125	51	16	28	33	15	M8
HY8313.5-2A36x160	HY8313.5-2B36x160	160	59	18	36	37	15	M10
HY8313.5-2A40x200	HY8313.5-2B40x200	200	66	20	40	39	15	M10

注：内孔可按需定制 Notes: The bore can be customized upon request.

HY 8313.7

JB/T 7273.7-2014

内波纹手轮
Solid Handwheels
with Fold-away Handle



名称 Name	材料 Material	表面处理 Surfaced process
手轮 Handwheel	胶木 Bakelite	黑色 Black, glossy finish
手柄 Handle	胶木 Bakelite	黑色 Black, glossy finish

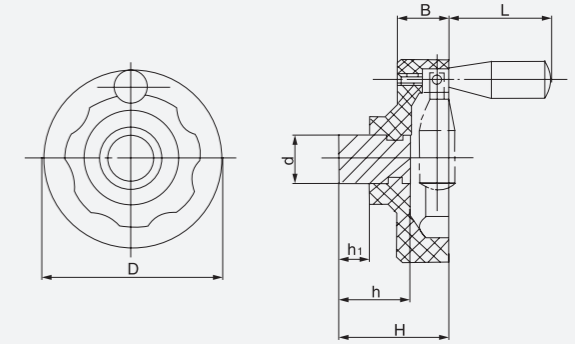
参数尺寸 Parameter Size

(mm)

产品编号 Item No.		主要尺寸 Main dimensions				安装孔 Mounting hole		
胶木 (Bakelite)		D	D ₁	H	B	L	d	h
HY8313.7A12x100		100	21	41	26	50	12	18
HY8313.7A12x125		125	21	44	30	63	12	18
HY8313.7A16x160		160	23	54	32	80	16	20
HY8313.7A18x200		200	26	56	34	80	18	25
HY8313.7A22(25)x250		250	31	68	36	100	22(25)	30

HY 8313.7-1

内波纹手轮
Solid Handwheels
with Fold-away Handle



名称 Name	材料 Material	表面处理 Surfaced process
手轮 Handwheel	胶木 Bakelite	黑色 Black, glossy finish
手柄 Handle	胶木 Bakelite	黑色 Black, glossy finish

参数尺寸 Parameter Size

(mm)

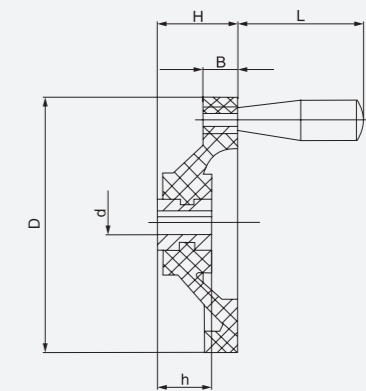
产品编号 Item No.		主要尺寸 Main dimensions				安装孔 Mounting hole		
胶木 (Bakelite)		D	H	B	L	d	h	h ₁
HY8313.7-1A28x100		100	56	26	50	28	37	15
HY8313.7-1A32x125		125	61	30	63	32	39	15
HY8313.7-1A36x160		160	70	32	80	36	40	15
HY8313.7-1A40x200		200	71	34	80	40	44	15

注：内孔可按需定制 Notes: The bore can be customized upon request.

HY 8313.8

JB/T 7273.8-2014

背面波纹手轮
Solid Handwheels
with Revolving Handle



名称 Name	材料 Material	表面处理 Surfaced process
手轮 Handwheel	胶木 Bakelite	黑色 Black, glossy finish
手柄 Handle	胶木 Bakelite	黑色 Black, glossy finish

参数尺寸 Parameter Size

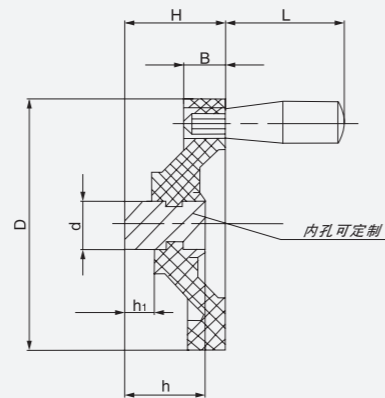
(mm)

产品编号 Item No.		主要尺寸 Main dimensions				安装孔 Mounting hole	
Type A	Type B	D	H	B	L	d	h
HY8313.8A10x80	HY8313.8B10x80	80	22	12	50	10	16
HY8313.8A12x100	HY8313.8B12x100	100	28	14	50	12	16
HY8313.8A12x125	HY8313.8B12x125	125	32	16	63	12	18
HY8313.8A16x160	HY8313.8B16x160	160	38	18	80	16	20
HY8313.8A18x180	HY8313.8B18x180	180	44	20	80	18	25
HY8313.8A18x200	HY8313.8B18x200	200	44	20	80	18	25
HY8313.8A22(25)x250	HY8313.8B22(25)x250	250	52	25	100	22(25)	28

注：键槽按 GB1095-79 规定，A 型无螺孔手柄 Notes: Keyway according to standard GB1095-79, type A without tap hole or handle.

HY 8313.8-1

背面波纹手轮
Solid Handwheels
with Revolving Handle



名称 Name	材料 Material	表面处理 Surfaced process
手轮 Handwheel	胶木 Bakelite	黑色 Black, glossy finish
手柄 Handle	胶木 Bakelite	黑色 Black, glossy finish

参数尺寸 Parameter Size

(mm)

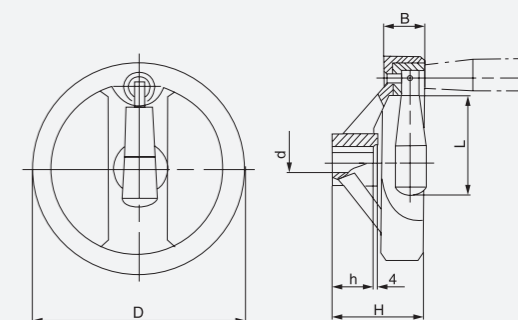
产品编号 Item No.		主要尺寸 Main dimensions				安装孔 Mounting hole		
Type A	Type B	D	H	B	L	d	h	h ₁
HY8313.8-1A28x100	HY8313.8-1B28x100	100	43	15	50	28	37	15
HY8313.8-1A32x125	HY8313.8-1B32x125	125	45	18	63	32	40	15
HY8313.8-1A36x160	HY8313.8-1B36x160	160	48	20	80	36	40	15
HY8313.8-1A40x200	HY8313.8-1B40x200	200	58	20	80	40	43	15

注：键槽按 GB1095-79 规定，A 型无螺孔手柄 Notes: Keyway according to standard GB1095-79, type A without tap hole or handle.

HY 8313.10

JB/T 7273.10-2014

带可折手柄双幅条手轮
Two-spoke Handwheels
with Fold-away Handle



名称 Name	材料 Material	表面处理 Surfaced process
手轮 Handwheel	铝合金 Aluminum alloy	银色 \ 黑色 Silver or black
手柄 Handle	塑 Plastic	黑色 Black

参数尺寸 Parameter Size

(mm)

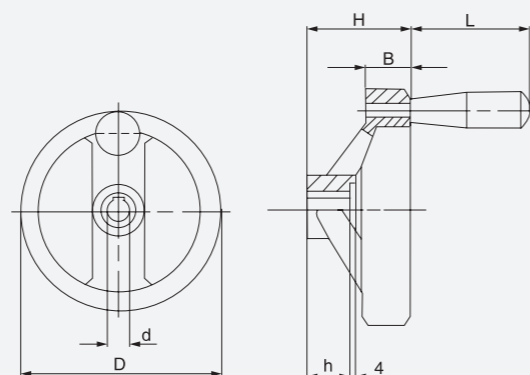
产品编号 Item No.		主要尺寸 Main dimensions				安装孔 Mounting hole	
铝合金 (Aluminum alloy)		D	H	B	L	d	h
HY8313.10\12x100		100	40	20	50	12	18
HY8313.10\12x125		125	44	22	63	12	18
HY8313.10\16x160		160	48	25	80	16	20
HY8313.10\18x200		200	54	28	80	18	25

注：键槽按 GB1095-79 规定 Notes: Keyway according to standard GB1095-79.

HY 8313.9

JB/T 7273.9-2014

双幅条手轮
Two-spoke Handwheels
with Revolving Handle



名称 Name	材料 Material	表面处理 Surfaced process
手轮 Handwheel	铝合金 Aluminum alloy	黑色 Black
手柄 Handle	塑 Plastic	黑色 Matt black

参数尺寸 Parameter Size

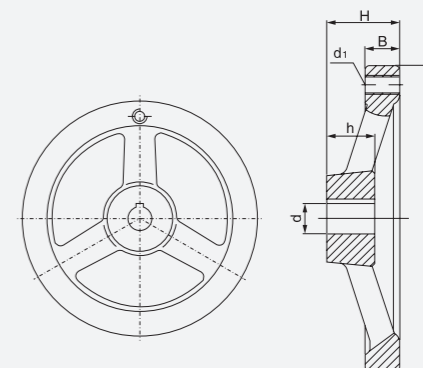
(mm)

产品编号 Item No.		主要尺寸 Main dimensions				安装孔 Mounting hole		
铝合金 (Aluminum alloy)		D	H	B	L	d	h	
HY8313.9\12x100		100	42	20	50	12	18	
HY8313.9\12x125		125	44	22	63	12	18	
HY8313.9\16x160		160	48	25	80	16	20	
HY8313.9\18x200		200	54	28	80	18	25	

注：键槽按 GB1095-79 规定 Notes: Keyway according to standard GB1095-79.

HY 8313.13

手轮
Solid Handwheels
with Revolving Handle



名称 Name	材料 Material	表面处理 Surfaced process
手轮 Handwheel	铝合金 Aluminum alloy	喷砂 \ 镀铬 \ 黑色喷塑 Sand - blasted/chrome bright/matt black
手柄 Handle	塑 Plastic	喷砂 \ 镀铬 \ 黑色喷塑 Sand - blasted/chrome bright/matt black

参数尺寸 Parameter Size

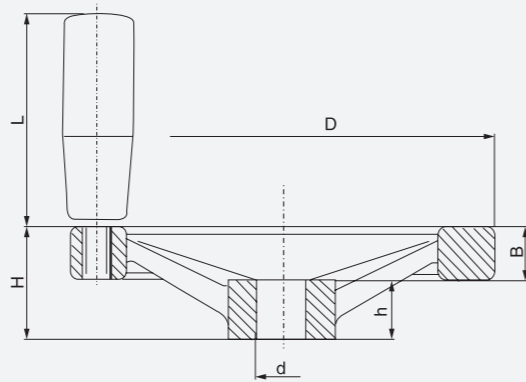
(mm)

产品编号 Item No.		主要尺寸 Main dimensions				安装孔 Mounting hole		
Type A	Type B	D	H	B	d	h	d ₁	
HY8313.13A10x100	HY8313.13B10x100	100	30	14	10	16	M6	
HY8313.13A12x125	HY8313.13B12x125	125	34	16	12	18	M8	
HY8313.13A16x160	HY8313.13B16x160	160	38	18	16	25	M10	
HY8313.13A16x203	HY8313.13B16x203	203	40	23	16	27	M10	
HY8313.13A18x250	HY8313.13B18x250	250	48	28	18	35	M10	
HY8313.13A20x320	HY8313.13B20x320	320	55	23	20	32	M12	

注：键槽按 GB1095-79 规定，A 型无螺孔手柄；主要应用于平面磨床
Notes: Keyway according to standard GB1095-79, type A without tap hole or handle; Mainly apply to surface grinding machine.

HY 8313.15

双幅条手轮
Two-spoke Handwheels



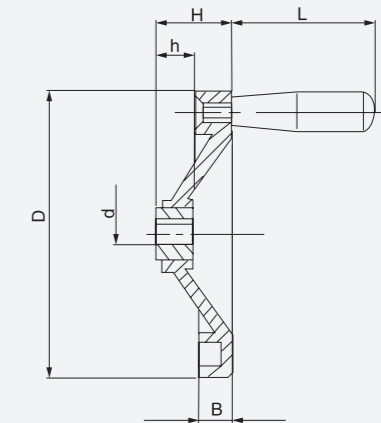
名称 Name	材料 Material	表面处理 Surfaced process
手轮 Handwheel	铝合金 Aluminum alloy	黑色 Black
手柄 Handle	塑 Plastic	黑色 Black

参数尺寸 Parameter Size (mm)

产品编号 Item No.	主要尺寸 Main dimensions				安装孔 Mounting hole	
铝合金 (Aluminum alloy)	D	H	B	L	d	h
HY8313.15\14x140	140	36	16.5	67.5	14	19
HY8313.15\14x160	160	39	18	82.5	14	20
HY8313.15\18x200	200	45	20.5	82.5	18	24

HY 8313.21

内碟形手轮
Solid Handwheels
with Revolving Handle



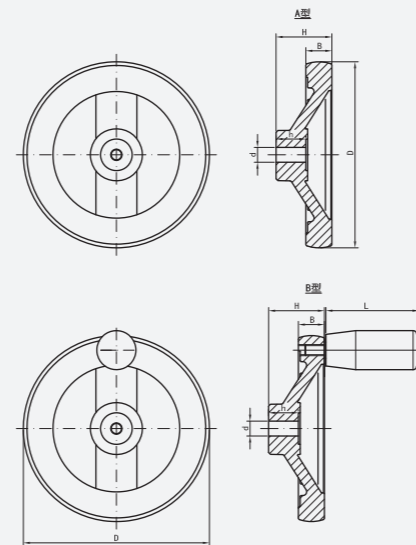
名称 Name	材料 Material	表面处理 Surfaced process
手轮 Handwheel	铝合金 Aluminum alloy	黑色 Black
手柄 Handle	塑 Plastic	黑色 Black

参数尺寸 Parameter Size (mm)

产品编号 Item No.		主要尺寸 Main dimensions				安装孔 Mounting hole	
Type A	Type B	D	H	B	L	d	h
HY8313.21\A16x160	HY8313.21\B16x160	160	40	18	80	16	20
HY8313.21\A18x200	HY8313.21\B18x200	200	45	20	80	18	25

HY 8313.16

满幅手轮
Solid Handwheels



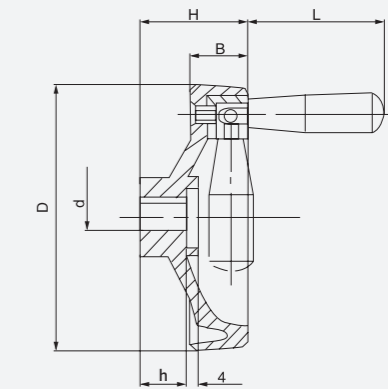
名称 Name	材料 Material	表面处理 Surfaced process
手轮 Handwheel	铝合金 Aluminum alloy	黑色 Black
手柄 Handle	塑 Plastic	黑色 Black

参数尺寸 Parameter Size (mm)

产品编号 Item No.		主要尺寸 Main dimensions				安装孔 Mounting hole	
Type A	Type B	D	H	B	L	d	h
HY8313.16\A6x60	HY8313.16\B6x60	60	22.5	13	28	6	15
HY8313.16\A8x80	HY8313.16\B8x80	80	26	13.5	50	8	15
HY8313.16\A10x100	HY8313.16\B10x100	100	30	14	50	10	16

HY 8313.22

带可折手柄满幅手轮
Solid Handwheels
with Fold-away Handle



名称 Name	材料 Material	表面处理 Surfaced process
手轮 Handwheel	铝合金 Aluminum alloy	黑色 Black
手柄 Handle	塑 Plastic	黑色 Matt black

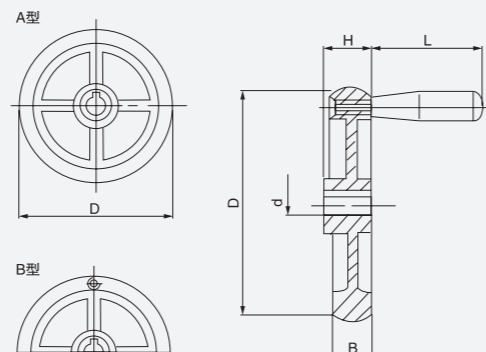
参数尺寸 Parameter Size (mm)

产品编号 Item No.		主要尺寸 Main dimensions				安装孔 Mounting hole	
铝合金 (Aluminum alloy)		D	H	B	L	d	h
HY8313.22\12(16)x100		100	40	21	50	12、16	18
HY8313.22\12x125		125	44	23	63	12	18
HY8313.22\16x160		160	46	26	80	16	20
HY8313.22\18(32)x200		200	48	28	80	18、32	21
HY8313.22\32x250		250	48	30	80	32	24

注：键槽按 GB1095-79 规定 Notes: Keyway according to standard GB1095-79.

HY 8313.25

直幅手轮
Spoked Handwheels
with Revolving Handle



名称 Name	材料 Material	表面处理 Surfaced process
手轮 Handwheel	铸铁 Cast iron	喷砂或镀铬 Sand-blasted/chrome bright
手柄 Handle	钢 Steel	

参数尺寸 Parameter Size

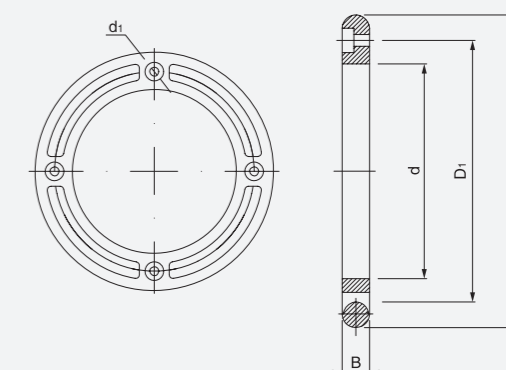
(mm)

产品编号 Item No.		主要尺寸 Main dimensions			安装孔 Mounting hole	
Type A	Type B	D	B	L	d	H
HY8313.25\ A10x100	HY8313.25\ B10x100	100	17.5	50	10	28.6
HY8313.25\ A12x125	HY8313.25\ B12x125	125	18	63	12	30
HY8313.25\ A16x152	HY8313.25\ B16x152	152	19	80	16	32
HY8313.25\ A18x203	HY8313.25\ B18x203	203	20	80	18	35
HY8313.25\ A18x254	HY8313.25\ B18x254	254	25.4	80	18	57

注：键槽按 GB1095-79 规定 Notes: Keyway according to standard GB1095-79.

HY 8313.34

内手轮
Internal Handwheels



名称 Name	材料 Material	表面处理 Surfaced process
手轮 Handwheel	铸铁 Cast iron	喷砂或镀铬 Sand-blasted/chrome bright

参数尺寸 Parameter Size

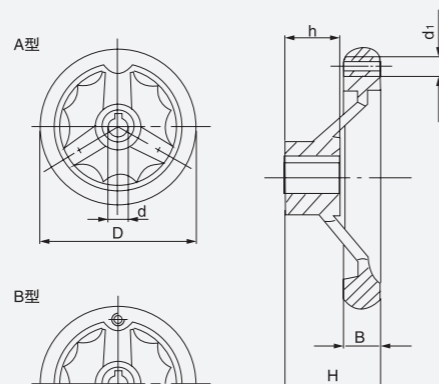
(mm)

产品编号 Item No.	主要尺寸 Main dimensions				安装孔 Mounting hole
铸铁 (Cast iron)	D	D ₁	d	B	d ₁
HY8313.34\170x267	267	222	170	25	12 沉孔 25
HY8313.34\190x310	310	250	190	30	16 沉孔 36
HY8313.34\220x320	320	268	220	28	12 沉孔 25

注：主要应用于凹版印刷机 Notes: Mainly apply to gravure printing machine.

HY 8313.28

波纹圆轮缘手轮
Spoked Handwheels
with Revolving Handle



名称 Name	材料 Material	表面处理 Surfaced process
手轮 Handwheel	铝合金 Aluminum alloy	抛光或黑色 Polishing/matt black
手柄 Handle	钢 Steel	(钢) 喷砂或镀铬 Sand-blasted/chrome bright

参数尺寸 Parameter Size

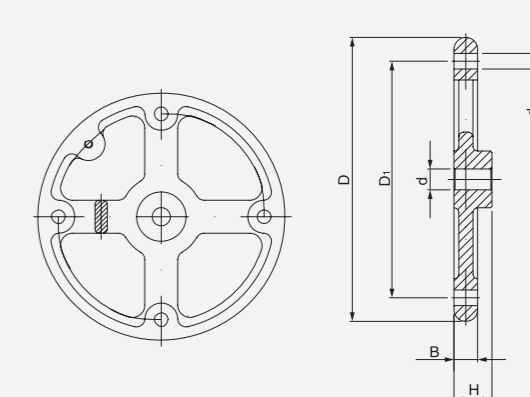
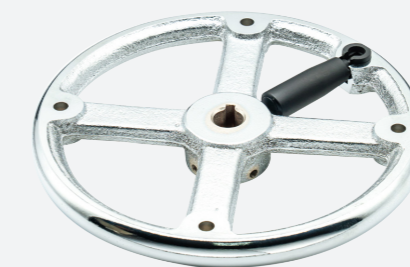
(mm)

产品编号 Item No.		主要尺寸 Main dimensions			安装孔 Mounting hole		
Type A	Type B	D	H	B	d	h	d ₁
HY8313.28\A10x117	HY8313.28\B10x117	117	43	16	10	21.5	M8
HY8313.28\A12x146	HY8313.28\B12x146	146	50	19	12	25	M8

注：键槽按 GB1095-79 规定 Notes: Keyway according to standard GB1095-79.

HY 8313.35

外手轮
Spoked Handwheels



名称 Name	材料 Material	表面处理 Surfaced process
手轮 Handwheel	铸铁 Cast iron	喷砂或镀铬 Sand-blasted/chrome bright

参数尺寸 Parameter Size

(mm)

产品编号 Item No.	主要尺寸 Main dimensions			安装孔 Mounting hole		
铸铁 (Cast iron)	D	H	D ₁	d	B	d ₁
HY8313.35\20x262	262	36	222	20	22	10
HY8313.35\20x317	317	40	250	20	25	16.5

注：主要应用于凹版印刷机 Notes: Mainly apply to gravure printing machine.